

Integrated Care Project in the West



Newsletter – August 2020

Our regular newsletter updating you on the progress of the integrated care project in the West of the Island is back!



Chief Minister Howard Quayle and Health Minister David Ashford unveil a plaque at the new Western Wellbeing Centre

The newly refurbished Western Wellbeing Centre was officially opened on Monday 24th February 2020 by Hon. David Ashford MHK, Minister for the Department of Health and Social Care who together with Chief Minister Hon. Howard Quayle MHK also officially introduced the Western Wellbeing Partnership. The official ceremony attended by invited guests was followed by an open day for people to view the new centre, meet staff and learn about the work of the Partnership.



Following the successful pilot and official launch of the Western Wellbeing Partnership in February, further planned development work and evaluation of the model was interrupted by Coronavirus a short time later. The Project Team was temporarily reassigned to other roles and the operations and resources of the Partnership's teams and organisations were widely disrupted.

The systems and process which our Practitioners in the West worked so hard to develop and pilot were put to the test and it was demonstrated that we were able to respond and adapt to the new challenges which the COVID-19 pandemic presented. Our Partnership organisations and their practitioners were able to quickly come together to 'act as one' and collaborate across disciplines and sectors towards a common goal creating a more connected health and care system in order to respond to the health and care demands of the people of the West of the Island.

This is the essence of our strategic aims on the Isle of Man as highlighted in Sir Jonathan Michaels' Independent Healthcare Review in 2019 which strongly recommends the development of an integrated approach to the delivery of health and care on the Isle of Man.

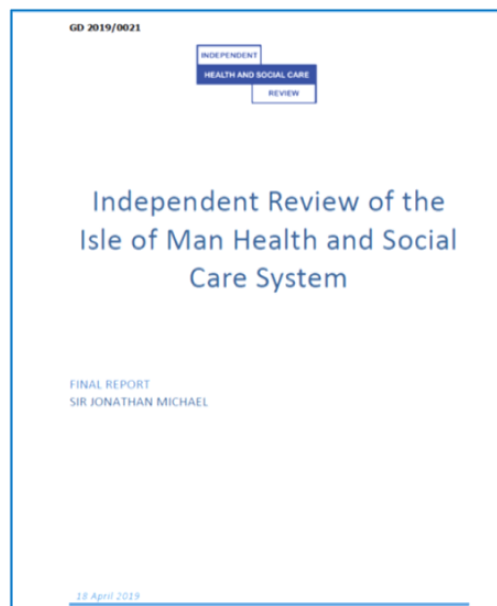


"The Isle of Man is well placed to make the changes required for its health and care system to become an exemplar of integrated health and care delivery and a model for others to follow.

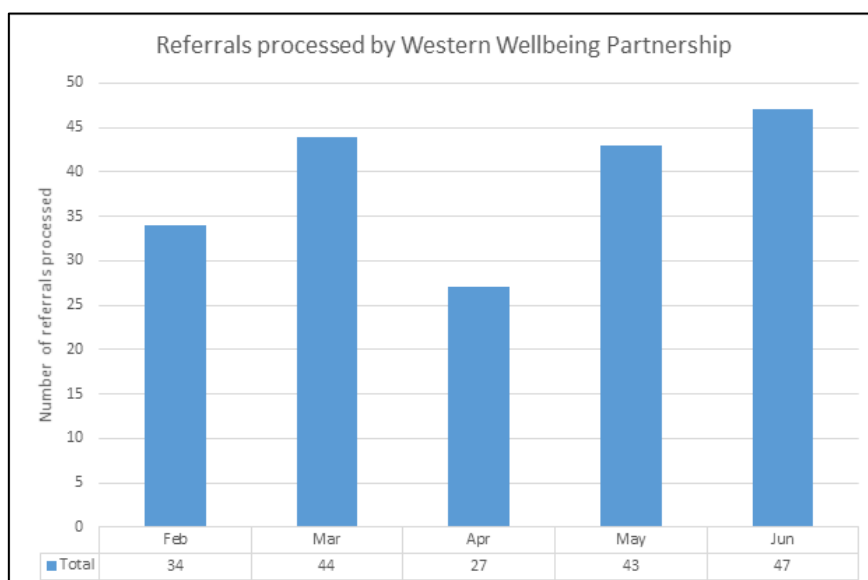
Indeed in terms of integration, the Island's size is a positive advantage.

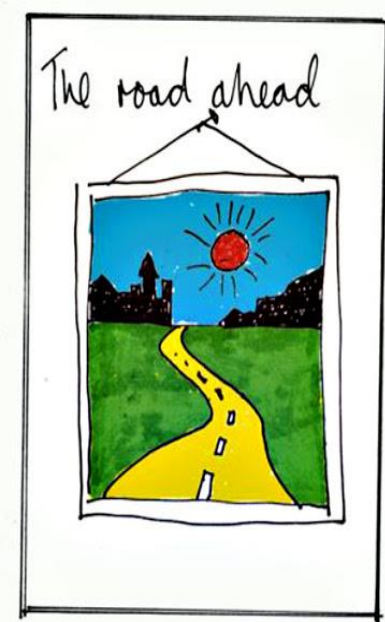
If it is not possible to integrate services for 85,000 people, surely it cannot be done anywhere".

Sir Jonathan Michael



The numbers of referrals to the Western Wellbeing Partnership did not significantly reduce during the COVID-19 period, except in April, which can be attributed to a significant reduction in overall demand on health and care services including Nobles Hospital as well as an overall reduction in referrals throughout all access points.





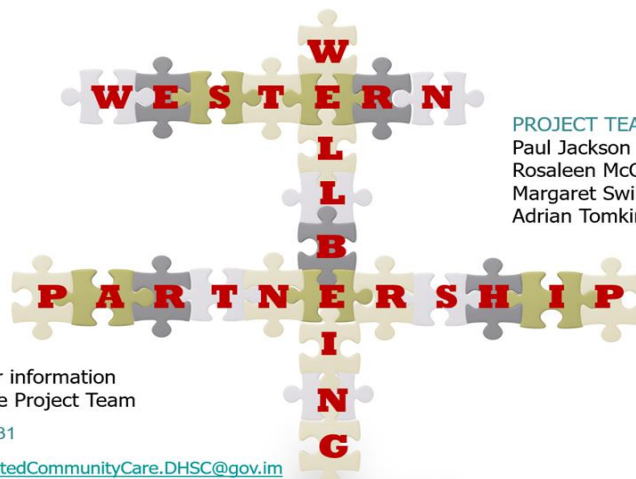
Mr. Oliver Radford has been appointed by the DHSC as General Manager for Integrated Community Care to oversee an Integrated Care Programme which supports the recommendations of the [Independent Health & Care Review \(2019\)](#) as well as a number of strategic aims detailed in [‘Health and Social Care in the Isle of Man – the next Five Years’ 2015](#) and [‘Delivering Longer Healthier Lives’ 2018](#)

The Wellbeing Partnership model successfully piloted and launched in the West of the Island will be extended across the Isle of Man with the development and implementation of locality based Partnership Teams in the North, South and East of the Island.

Work is already underway in the South to engage with key stakeholders over the next few months. Most importantly, this will include three public engagement events throughout September the details of which we will be shared with you very soon.



We will continue to update you on the progress of the Integrated Care Programme with regular newsletters which will include updates on the ongoing developments of Wellbeing Partnerships across the Island as well opportunities to become involved in the consultation and engagement processes.



PROJECT TEAM
Paul Jackson
Rosaleen McCaffrey
Margaret Swindlehurst
Adrian Tomkinson

For further information
contact the Project Team

685231

IntegratedCommunityCare.DHSC@gov.im